

Is That a Fish?

A Reading A-Z Level I Leveled Book
Word Count: 274



Reading A-Z

Visit www.readinga-z.com
for thousands of books and materials.



www.readinga-z.com

Is That a Fish?



Written by Susan Hartley

www.readinga-z.com

Photo Credits:

Front cover: © iStock.com/barbaraaaa; back cover, pages 4 (e, j, m), 5 (c, n), 9 (bottom); 10 (all): © Marty Snyderman/Spirit/Corbis; pages 4 (b, f, i, k), 5 (d, g, i, o, bottom), 9 (top), 11 (all), 14 (all), 15 (all): © ArtToday; page 5 (h): © James Gritz/Photodisc/Getty Images; page 6: © Colin Parker/National Geographic My Shot/National Geographic Creative; page 7: © Photononstop/SuperStock; page 8: Dinodia Photos/Alamy; page 12: © iStock.com/Thomas Eckstadt; page 13: © A. Hartl/Blickwinkel/age fotostock

Cover: Leafy sea dragon

Back cover: Whale shark and divers

Title page: Dragon eel

Pages 4-5

- a Leafy sea dragon
- b Cownose ray
- c Commerson's frogfish
- d Blacktip reef shark
- e Barracuda (center) and jacks
- f Flying gurnard
- g Clownfish
- h Porcupine fish or burrfish
- i Hawkfish
- j Yellowhead wrasse
- k Anthias and damselfish
- l Trumpetfish
- m Scalloped hammerhead shark
- n Goliath grouper with remora
- o Lionfish

Page 14

- a Trumpetfish
- b Red scorpionfish
- c Flying gurnard
- d Porcupine fish or burrfish

Is That a Fish?
Level I Leveled Book
© Learning A-Z
Written by Susan Hartley

All rights reserved.

www.readinga-z.com

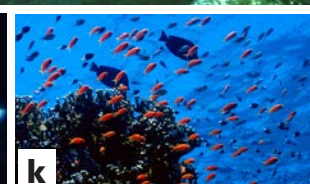
Correlation

LEVEL I	
Fountas & Pinnell	I
Reading Recovery	15-16
DRA	16



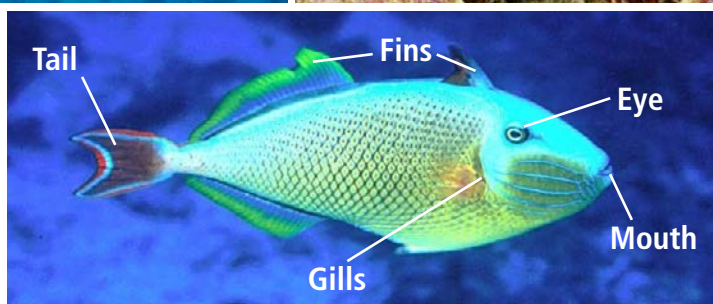
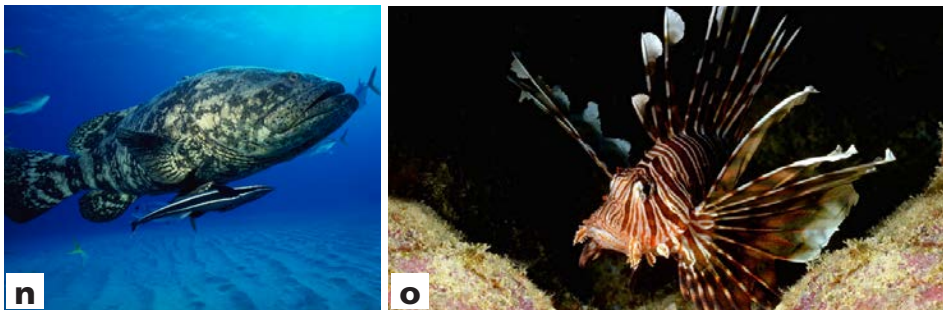
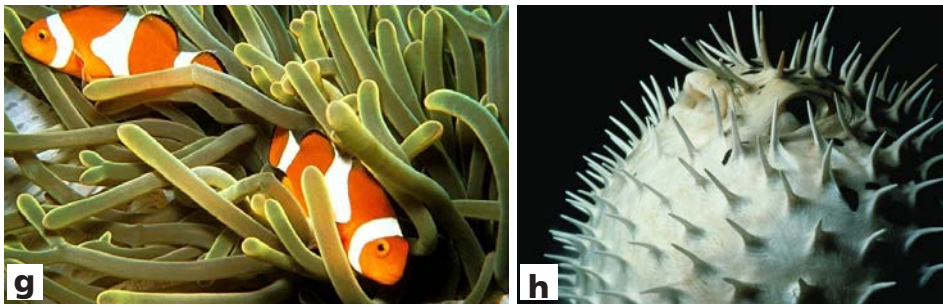
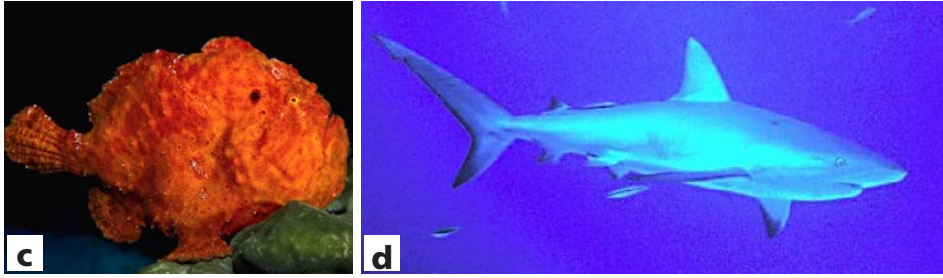
Table of Contents

What Are Fish?	4
A Horse or a Fish?	7
A Snake or a Fish?	9
Rays	10
Fish Out of Water	12
Is That a Fish?	14
Glossary	16
Index	16



What Are Fish?

What does a fish look like?
You might be surprised.



A whale shark can be 15 m (50 ft) long. Its mouth can be 1.2 m (4 ft) wide!

Fish can be very big or very small.

This shark is the largest fish in the world.

Like other fish, it has a **backbone**.

It breathes through **gills**.

It has **fins** to help it swim.

A Horse or a Fish?

Some fish look like other animals.

This fish is called a **seahorse**.

The fin on the back of the seahorse
beats very fast.

This is how the seahorse moves around.



This seahorse is called a leafy sea dragon.

A seahorse uses its tail to grab
onto plants in the water.
It can hide in the plants
where no hungry fish can find it.

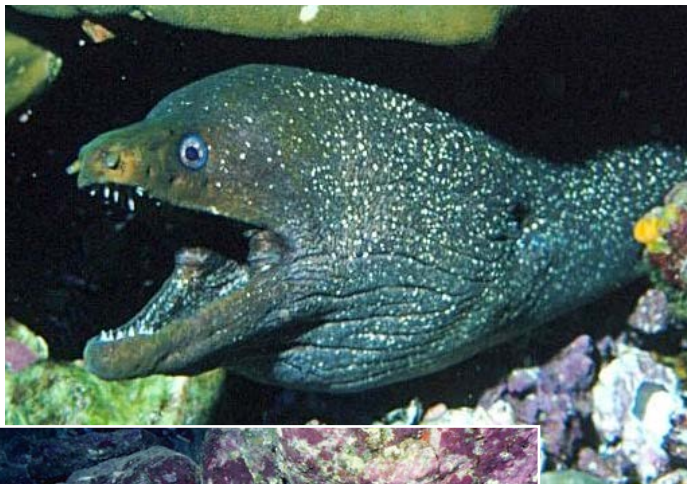
A Snake or a Fish?

This fish, called an **eel**, looks a lot like a snake.

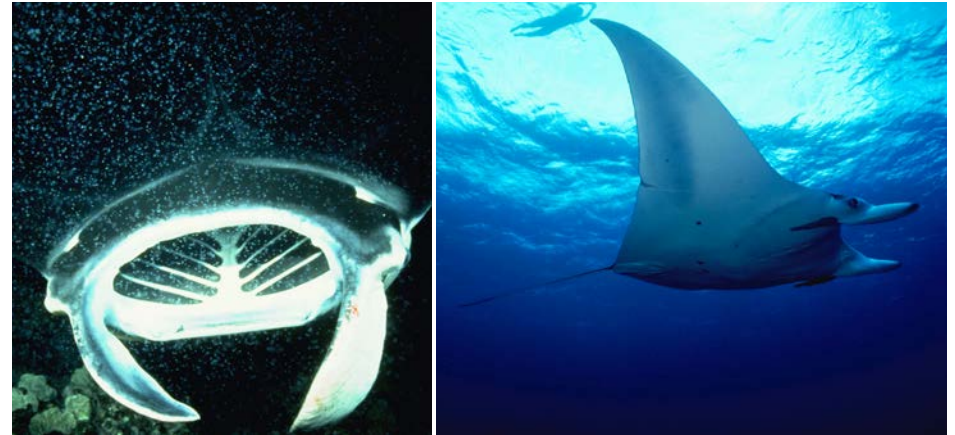
It swims by moving its whole body.

It can swim forward and backward.

It breathes by opening and closing its mouth to pump water over its gills.



This is a moray eel. Moray eels can be as long as 3 m (10 ft).



Manta rays are the largest rays. They can be 6.7 m (22 ft) wide.

Rays

This large, flat fish is called a **ray**.

It has wing-like fins that help it glide through the water.



Rays are gentle and curious.

Some rays have spines on their tails.
They use the spines to sting their prey.
Rays can hide on the bottom of the sea.



Rays bury themselves in sand.



This fish is called a mudskipper.

Fish Out of Water

This fish lives on mud flats.
When the tide goes out,
the fish can stay on the land
until the water comes back.
It breathes through its skin.



This fish is called a climbing perch. It can stay out of the water for a long time.

This fish sometimes comes onto the land to look for fresh water.

It wiggles its tail and props its body up on its fins when it moves.

This makes it look like the fish can walk.



a



b



c



d

Is That a Fish?

Fish can be many colors, sizes, and shapes.

They can move in different ways.

What will you see the next time you close your eyes and picture a fish?



Glossary

- backbone** a bone that goes along the back of an animal. It holds up the rest of the bones. (p. 6)
- eel** a long fish that looks like a snake (p. 9)
- fins** wing-like parts used for swimming (p. 6)
- gills** the breathing parts of a fish. They look like slits behind the fish's head. (p. 6)
- ray** a wide, flat, shark-like fish (p. 10)
- seahorse** a fish that looks like a horse (p. 7)

Index

- | | |
|---------------------|----------------|
| climbing perch, 13 | ray, 10, 11 |
| leafy sea dragon, 8 | seahorse, 7, 8 |
| moray eel, 9 | shark, 6 |
| mudskipper, 12 | |